

Features:

- Small Size (only 9.00 x 4.00 x 1.59")
- Universal AC Input (85-264 VAC / 47-63Hz)
- Active PFC for EN61000-3-2 Class D Equipment
- Industrial Grade Components for High Reliability
- Current Share, Remote on/off, Remote Sense, AC OK and DC OK Signals & Optional 5 VSB
- Highly Accelerated Life Test (HALT)
- > 200k Hours MTBF per MIL-STD-HDBK 217E
- International Safety Approvals, CB Report & CE Mark (LVD)
- 2 Year Warranty



Input Specifications:

Input Range	Universal VAC (85-264 VAC)
Input Frequency	47-63 Hz or DC
Inrush Current	<20A @ 110VAC / <40A @ 220VAC max (cold start)
Input Current	6.5A @ 110 VAC / 3.5A @ 220 VAC Maximum RMS (Full Load)
Efficiency	Up to 92%
Hold-up Time	>16ms @ 120 VAC and full load
Leakage Current	<750µA maximum @ 264 VAC
Harmonics	EN61000-3-2 Class D

Output Specifications:

Adjustment Range	±5% minimum
Minimum Load	none
Regulation	0.1% Line / 0.25% Load (max)
Ripple / Noise	± 1% or 250mV pk-pk max (20MHz)
Set-Point Accuracy	±2% (maximum)
Over Current Protection	Square Current Limit
Over Voltage Protection	120-130%, of setpoint

Status & Control Signals:

- Optional 5V / 1 Amp Auxiliary Output
- Remote Sense (Compensates for <0.5 drop)
- DC OK (Open Collector)
- Current Share (Single Wire, +/- 5% accuracy)
- Remote on/off (TTL Logic Low=Off, High = On (open collector))

Electromagnetic Compatibility:

Electrostatic Discharge	EN61000-4-2, ±4KV Contact / ±8KV Air Discharge
Radiated Susceptibility	EN61000-4-3, 26-1000MHz, 10V/M, 80% AM
EFT / Bursts	EN61000-4-4, ± 2KV
Surges	EN61000-4-5, ±2KV Line-Earth, ±1KV Line-Line
Conducted Immunity	EN61000-4-6, 0.15-800MHz, 10V, 80% AM
Voltage Dips	EN61000-4-11, 95% Dip & 10ms, 30% Dip & 500ms
Voltage Interruptions	EN61000-4-11, 95% Reduction, 5s
Fluctuations & Flicker	EN61000-3-3

Environmental Specifications:

Operating Temp	0 ~50°C (De-Rate 2.5%/1°C Rise To +70°C)
Storage Temp	-50 ~ +85°C
Cooling	Two Internal Fans for self-cooled operation
Humidity	5 to 95% RH Non-Condensing
Vibration	3 Axes 1 Oct/min, 5 min at 4 Res. 0.75G Pk, 5-500Hz
Shock	20G Peak Acceleration
Reliability	>200k hours MTBF (Full Load and 25°C Operation)

Safety & Emissions:

- UL 60950-1
- CSA 22.2 No. 60950-3
- BAUART EN60950-1
- CB Test Report (IEC60950-1)
- CE Mark (LVD)
- FCC Class B
- CISPR 11 / CISPR 22 Class B

AAD600 Series

600 Watt Single Output Switching Power Supply

TAMURA

General Purpose Switching Power Supplies

Output Models:

AAD600S-4	12V 42A
AAD600S-5	15V 36A
AAD600S-6	24V 23A
AAD600S-7	28V 20A
AAD600S-8	36V 16A
AAD600S-9	48V 12.5A

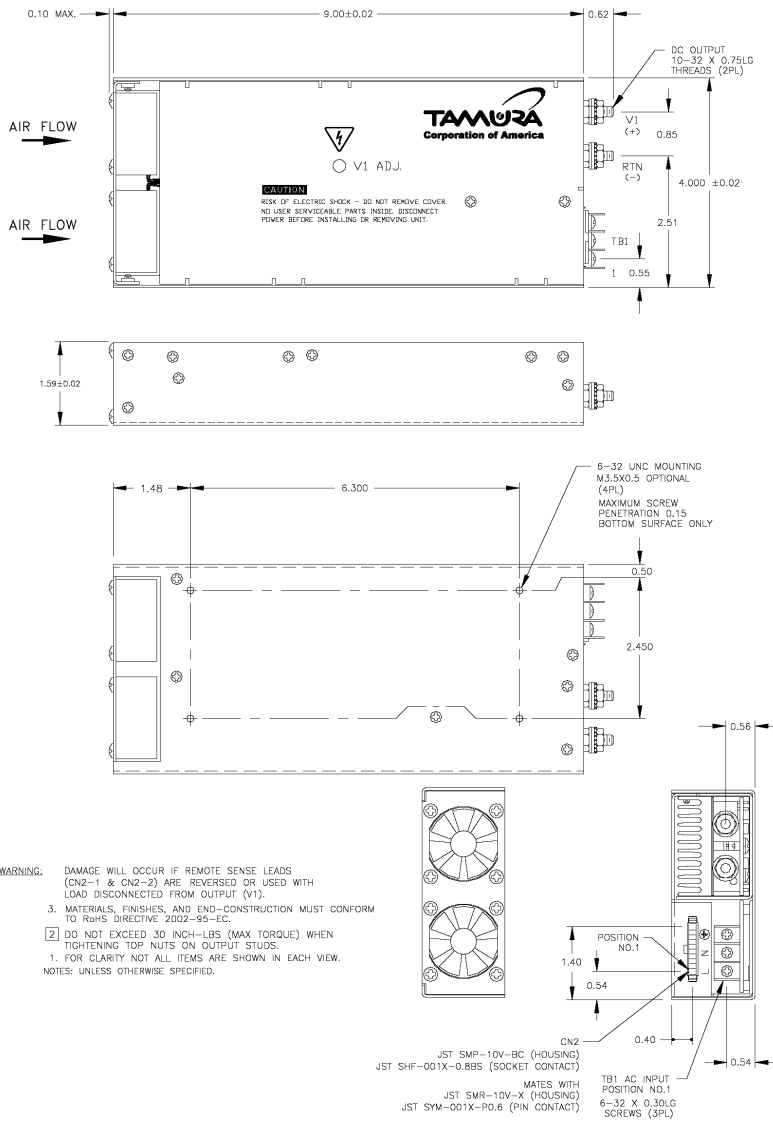
Options:

- U = DC OK Invert
- M = Metric Mounting
- P = 5V Standby (1 Amp)
- A = Droop Current Share
- B = Power Fail Invert
- s = Remote On/Off Invert
- O = Include OR'ng Diodes

Mechanical Specifications:

Weight (pounds):

2.12



Input Pin Assignmnets:

CN1-1	Line
CN1-2	Neutral
CN1-3	Field Ground

Status / Control Pin Assignmnets:

DCN2-1	+Sense
DCN2-2	- Sense
DCN2-3	DC OK
DCN2-4	Power Fail
DCN2-5	No Connection
DCN2-6	Remote on/off
DCN2-7	Current Share
DCN2-8	Signal Return
DCN2-9	5V Standby Return
DCN2-10	+5V Standby

DCN2 Mating Connector:

- JST SMR-10V-X (Housing)
- JST SYM-001X-P0.6 (Pins)

Soft Copy of this specification:
<http://www.powergateilc.com/pdf/aad600.pdf>

Factory Specification:
<http://www.tamuracorp.com/clientuploads/pdfs/engineeringdocs/AAD600S.pdf>